



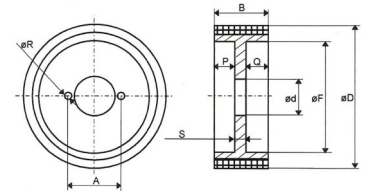
FEEDING ROLLERS FOR DIFFERENT MACHINES AND INFEED DEVICES

The Rubber coated advance rollers have a core in aluminium or steel casting. The vulcanised rubber coating has a 70 shore hardness. It's very hard-wearing and gives a good adhesion Wood/rubber. Special dimensions and rubber qualities on request.



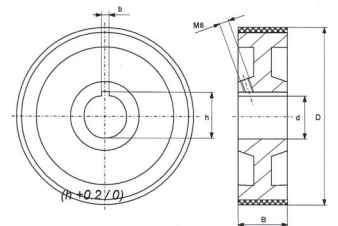
Rubber coated infeed rollers for automatic feeders

Dimension	D	B	Ød	A	ØR	S	P	Q	ØF
ET-1G.1120.60.1	120	60	35	48	8,5	12	24	24	74
ET-1G.1120.50.1	120	50	35	48	8,5	12	19	19	74
ET-1G.1120.40.1	120	40	35	48	8,5	12	14	14	74
ET-1G.1120.30.1	120	30	35	48	8,5	12	9	9	74
ET-1G.1110.60.1	110	60	35	48	8,5	12	24	24	74
ET-1G.1110.50.1	110	50	35	48	8,5	12	19	19	74
ET-1G.1110.40.1	110	40	35	48	8,5	12	14	14	74
ET-1G.1110.30.1	110	30	35	48	8,5	12	9	9	74



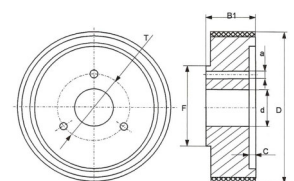
Rubber coated infeed rollers for 4 sides machines

ART-NO.	D	B	d	b	H+0,2/0
ET-1G.2120.50.1	120	50	25H9	8H9	28,3
ET-1G.2120.25.1	120	25	25H9	8H9	28,3
ET-1G.2120.50.30.1	120	50	30H9	10H9	33,3
ET-1G.2120.25.30.1	120	25	30H9	10H9	33,3
ET-1G.2140.50.30.1	140	50	30H9	8H9	33,3
ET-1G.2140.25.30.1	140	25	30H9	8H9	33,3
ET-1G.2140.50.35.1	140	50	35H9	10H9	38,3
ET-1G.2140.25.35.1	140	25	35H9	10H9	38,3
ET-1G.2170.50.35.1	170	50	35H9	10H9	38,3
ET-1G.2170.25.35.1	170	25	35H9	10H9	38,3



Rubber coated cup-shaped rollers for 4 sides machines

ART-NO	D	B1	B	T	C	F	a	d
ET-1G.3140.50.30.1	140	55	50	Ø55		Ø70	11	Ø30H9
ET-1G.140.30.30.1	140	35	30	Ø55		Ø70	11	Ø30H9
ET-1G.140.20.30.1	140	25	20	Ø55	9	Ø70	11	Ø30H9



Please indicate in your Inquiry the following Information:

- ▶ Machine type ▶ Diameter ▶ Bore ▶ Kay way ▶ Type of roller



TOOTHED INFEED ROLLERS

The optimised tooth pitch for a reliable contact in the woods of Different hardness and surface structure advance movement at all Costs. The different roller widths are adapted to the practice needs.

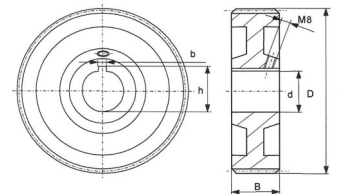
The standard diameters of ore are 25 mm, 30 mm, and 35 mm, the standard exterior diameters are 120 mm to 180 mm.

Please ask for other dimensions.

Toothed infeed rollers for 4 sides machines:

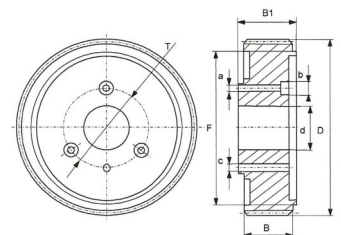
STANDARD PROFILE; HELICAL TEETH

Dimension	D	B	Ød	b	H+0,2/0
ET-1T.1120.50.25.1	120	50	25H9	8H9	28,3
ET-1T.1120.30.25.1	120	30	25H9	8H9	28,3
ET-1T.1120.50.30.1	120	50	30H9	10H9	33,3
ET-1T.1120.20.30.1	120	20	30H9	10H9	33,3
ET-1T.1130.50.30.1	130	50	30H9	8H9	33,3
ET-1T.1130.30.30.1	130	30	30H9	8H9	33,3
ET-1T.1130.50.35.1	130	50	35H9	10H9	33,3
ET-1T.130.30.35.10	130	20	35H9	10H9	33,3
ET-1T.140.50.30.08	140	50	30H9	8H9	33,3
ET-1T.140.30.30.08	140	30	30H9	8H9	33,3
ET-1T.1140.50.35.1	140	50	30H9	10H9	38,3
ET-1T.1140.15.35.1	140	15	30H9	10H9	38,3
ET-1T.1150.50.30.1	150	50	30H9	8H9	33,3
ET-1T.1160.50.35.1	160	50	35H9	10H9	38,3



Toothed infeed rollers for Automatic feeders

	D	B	B1	F	d	a	b	c	T
ET-1T.2140.50.30.1	140	50	56,5	125	30H9	11,6		10,5	54,5
ET-1T.2140.30.30.1	140	30	36,5	125	30H9	11,6		10,5	
ET-1T.2140.25.30.1	140	25	31,5	125	30H9	11,6	18	10,5	
ET-1T.2140.20.30.1	140	20	26,5	125	30H9	11,6	18	10,5	
ET-1T.2140.16.30.1	140	16	22,5	125	30H9	11,6	18	10,5	
ET-1T.2160.20.35.1	160	20	28	70	35H9	9	14,5	M8	
ET-1T.2170.50.35.1	170	47	54	150	35H9	11,5		10	
ET-1T.2170.20.35.1	170	17	24	150	35H9	11,5	18	10	



<p>Form of Rollers?</p>	<p>Rollers according to customers sketch</p>	
-------------------------	--	--

Direction of rotation?